

Supplementary file 1

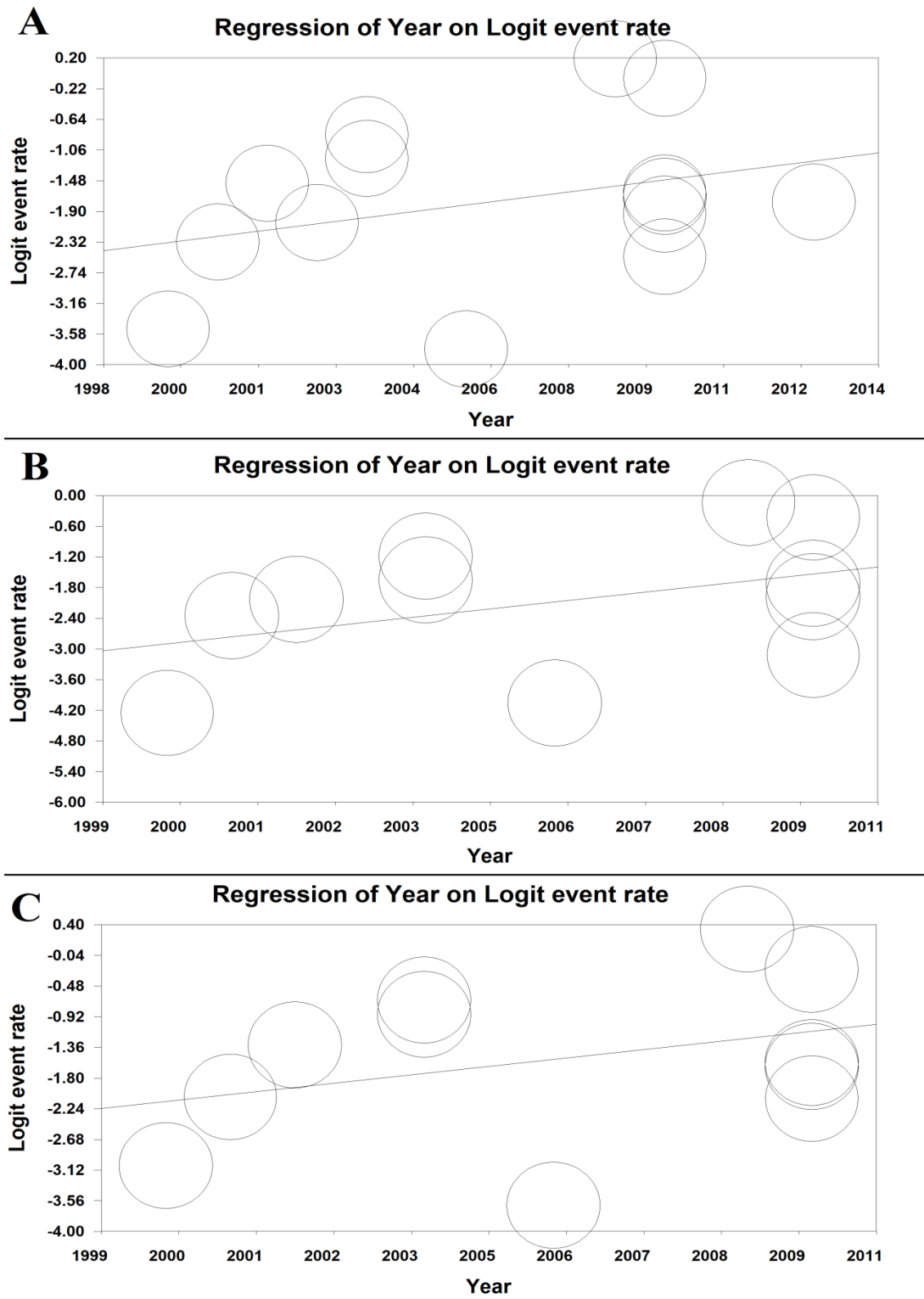
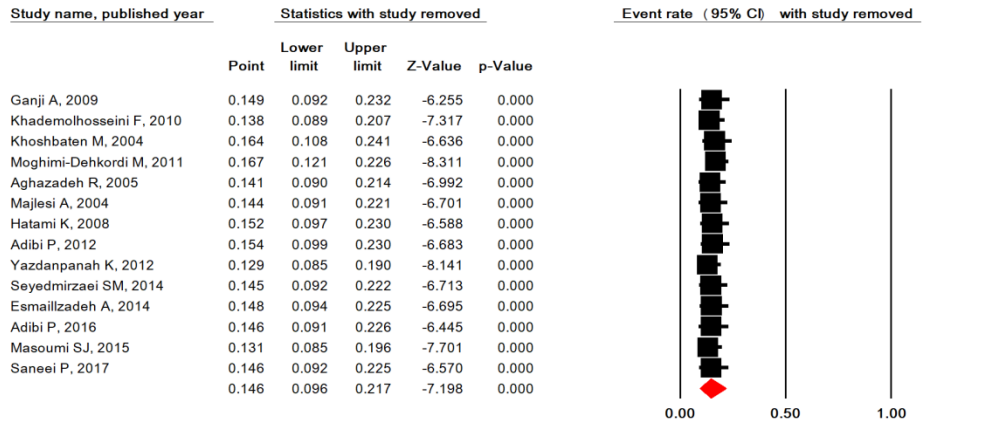
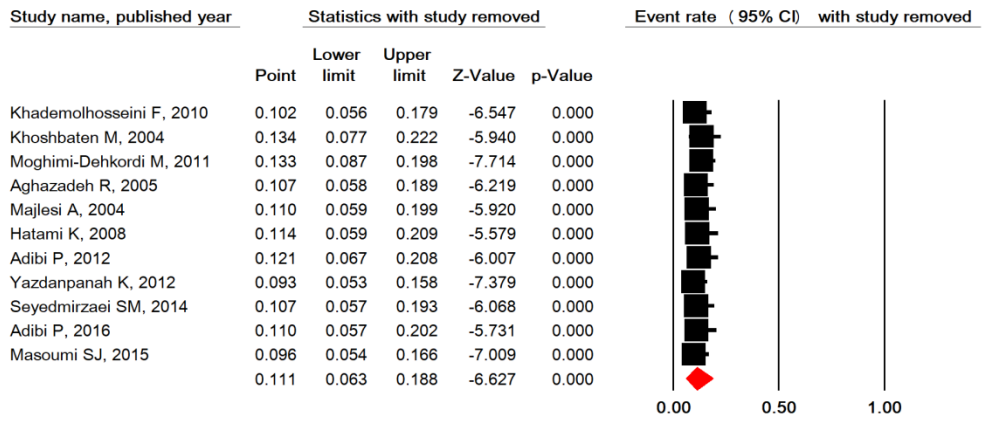


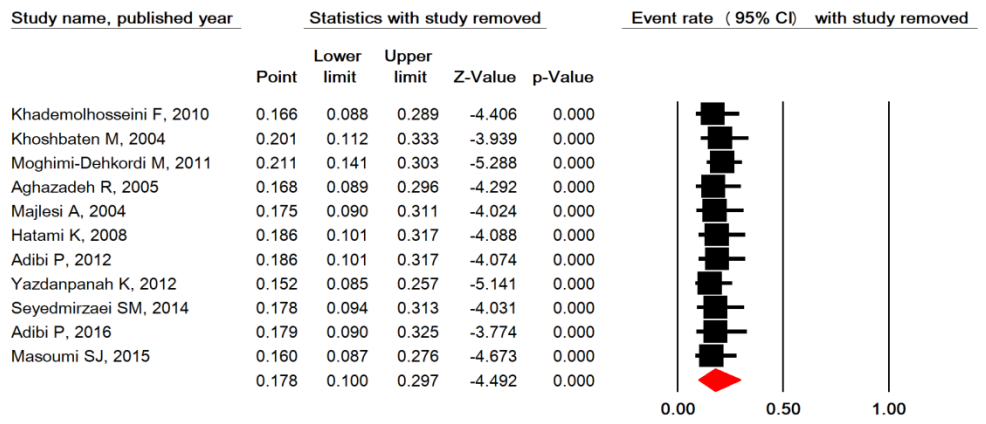
Figure S1. Meta-regression model for the total prevalence of dyspepsia (A) and the prevalence of dyspepsia in males (B) and females (C) according to the year of study.

A

Meta Analysis

B

Meta Analysis

C

Meta Analysis

Figure S2. Sensitivity analysis for the total prevalence of dyspepsia (A) and the prevalence of dyspepsia in males (B) and females (C).

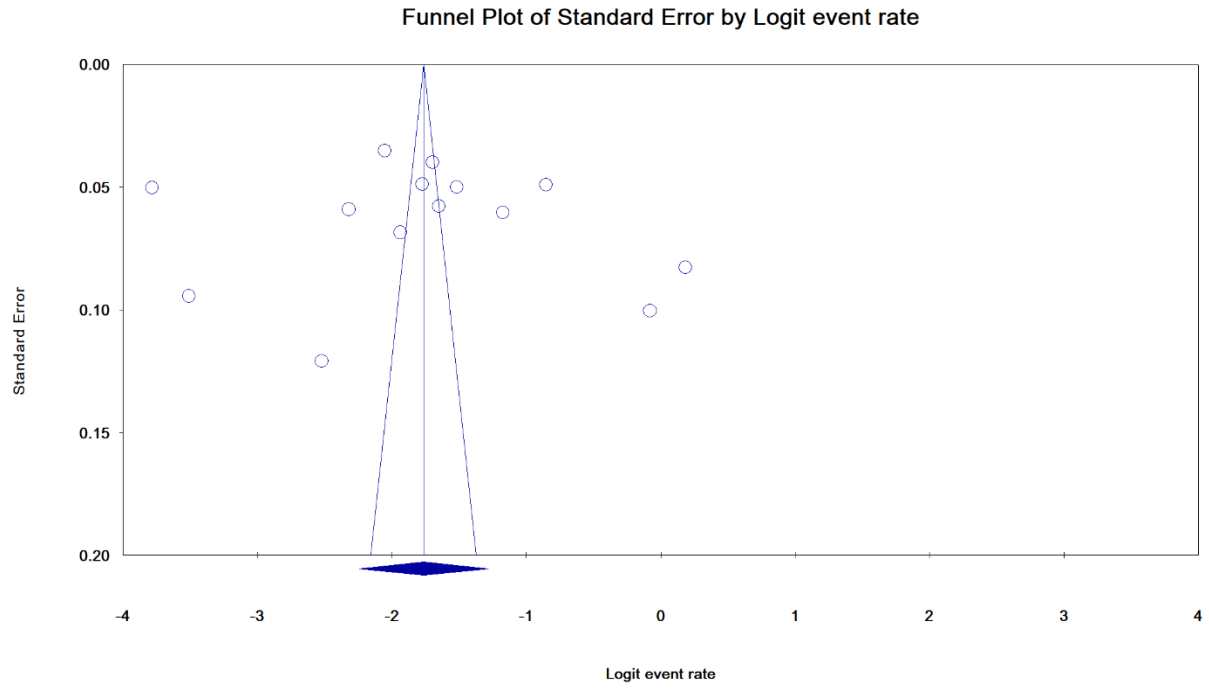


Figure S3. Publication bias.