

Supplementary file 1. Summary of clinical and CT manifestations and CTs of a 57-year-old female and 47 and 49 years old male patients.

Table S1. Summary of Clinical Manifestations in 22 Cases of PC with Consolidation.						
Case	Gender	Age	Clinical symptoms	Immune status	Diagnosis method	Follow-up
1	F	38	Cough for 2 months, fever for 2 days	Normal	CCPA test: Positive	Lesion absorption
2	M	49	Cough for 1 month	Normal	CCPA test: Positive	Lesion absorption
3	F	57	Cough and sputum for >20 days, fever for several days	Low (diabetes)	Biopsy	Lesion absorption
4	F	59	Upper left chest tightness for > 20 days	Normal	Biopsy	Lesion absorption
5	M	80	Fever, cough for > 4 days	Low (Multiple myeloma, during chemotherapy)	CCPA test: Positive	Lesion absorption
6	F	21	Left chest pain for 2 weeks	Normal	CCPA test: Positive	Lesion absorption
7	F	44	Cough and sputum for 1 month	Normal	CCPA test: Positive	Lesion absorption
8	F	33	Cough, sputum with chest pain for 1 month	Low (Systemic lupus erythematosus)	CCPA test: Positive	Lesion absorption
9	M	56	Cough and sputum for several days	Normal	CCPA test: Positive	Lesion absorption
10	M	48	Repeated right chest pain and cough for > 1 month, followed by fever for 10 days	Low (diabetes)	CCPA test: Positive	Lesion absorption
11	M	47	Cough, sputum	Normal	CCPA test: Positive	Lesion absorption
12	F	51	Cough for 1 week	Low (Sjogren's syndrome)	The alveolar lavage fluid: positive	Lesion absorption
13	F	55	Cough and sputum for 2 months	Normal	CCPA test: Positive	Lesion absorption
14	M	77	Cough for 1 month and fever for 3 days	Low (chronic hepatitis B)	CCPA test: Positive	Lesion absorption
15	M	63	Cough, sputum, chest pain for 1 week	Normal	Surgery resection	Surgery resection
16	M	35	Cough and sputum for > 10 days	Low (chronic renal insufficiency)	CCPA test: Positive	Lesion absorption
17	M	74	Cough and sputum for 3 days	Normal	CCPA test: Positive	Lesion absorption
18	F	53	Cough and sputum for 15 days, fever for 3 days	Low (diabetes)	The alveolar lavage fluid: positive	Lesion absorption
19	M	52	Cough for 10 days	Normal	The alveolar lavage fluid: positive	Lesion absorption

20	F	45	Right back pain for more than 20 days, Cough and sputum for 15 days	Low (chronic hepatitis B)	Biopsy	Lesion absorption
21	F	67	Cough and sputum for more than 2 months	Normal	Surgery resection	Surgery resection
22	F	29	Cough for more than 20 days, fever with chest pain for 14 days	Normal	Biopsy	Lesion absorption
PC, Pulmonary cryptococcosis; M, male; F, female; CCPA test, Cryptococcus capsular polysaccharide antigen test.						

Table S2. Summary of CT Manifestations in 22 Cases of PC with Consolidation.

Case	The number of lung	The number of lesion	Distribution of lobe or lung	Lobe position	Pleural parallel	Air bronchogram sign	Halo sign	Cavity sign	“Pasting wall” sign	Pleural thickening	Pleural effusion
1	Single	Single	Simple lobe, lower lobe of right lung	Lateral zone	1	2	0	0	1	1	0
2	Single	Multiple	Simple lobe, lower lobe of right lung	Inner middle zone	1	1	1	1	1	1	0
3	double	Multiple	Double lobes, upper lobe of right lung, lower lobe of left lung	Middle lateral zone	1	3	1	1	1	1	0
4	Single	Single	Simple lobe, upper lobe of right lung	Middle lateral zone	1	1	1	0	0	1	0
5	Single	Single	Simple lobe, upper lobe of right lung	Lateral zone	1	1	1	1	1	1	0
6	Single	Multiple	Simple lobe, lower lobe of right lung	Lateral zone	1	2	1	0	1	1	1
7	Single	Multiple	Double lobes, upper and lower lobe of right lung	Inner, middle zone	0	0	0	0	0	0	0

8	double	Multiple	Three lobes, upper lobe of both lungs and middle lobe of right lung	Middle, lateral zone	1	3	0	1	0	1	1
9	Single	Single	Simple lobe, upper lobe of right lung	Lateral zone	1	2	1	0	0	0	0
10	Single	Multiple	Simple lobe, lower lobe of right lung	Inner, middle, lateral zone	0	3	0	0	0	1	1
11	Single	Multiple	Simple lobe, lower lobe of right lung	Middle lateral zone	1	3	1	0	0	0	0
12	Single	Multiple	Simple lobe, lower lobe of right lung	Middle lateral zone	1	0	1	1	0	0	0
13	Single	Single	Simple lobe, upper lobe of left lung	Inner, middle zone	1	1	1	0	0	1	0
14	double	Multiple	Double lobes, upper lobe of both lungs	Middle lateral zone	0	3	1	0	1	1	0
15	Single	Single	Simple lobe, middle lobe of right lung	Inner, middle, lateral zone	0	2	1	0	0	1	0
16	double	Multiple	Three lobes, upper lobe of right lung, lower lobe of both lungs	Middle lateral zone	1	3	1	1	0	1	0
17	Single	Multiple	Simple lobe, upper lobe of right lung	Middle lateral zone	1	1	1	0	1	1	0
18	Single	Multiple	Double lobes, upper and lower lobe	Middle lateral zone	1	3	1	0	1	1	0

			of of left lung								
19	Single	Single	Simple lobe, upper lobe of left lung	Inner, middle, lateral zone	0	3	1	0	1	1	0
20	Single	Multiple	Simple lobe, lower lobe of right lung	Middle lateral zone	1	3	1	1	1	1	0
21	Single	Multiple	Simple lobe, lower lobe of left lung	Middle lateral zone	1	2	1	0	0	1	0
22	Single	Single	Simple lobe, lower lobe of right lung	Inner, middle, lateral zone	1	0	1	1	0	0	0
<p>Air bronchogram signs: 0, no air bronchogram sign; 1, bronchus penetrates the lesion; 2, naturally compressed and narrowed for natural termination after the bronchus enters the lesion; 3, including 1 and 2. Other data: 0, no signs; 1, signs for pleural parallel, halo sign, cavity sign, "pasting wall" sign, pleural thickening, and pleural effusion.</p>											

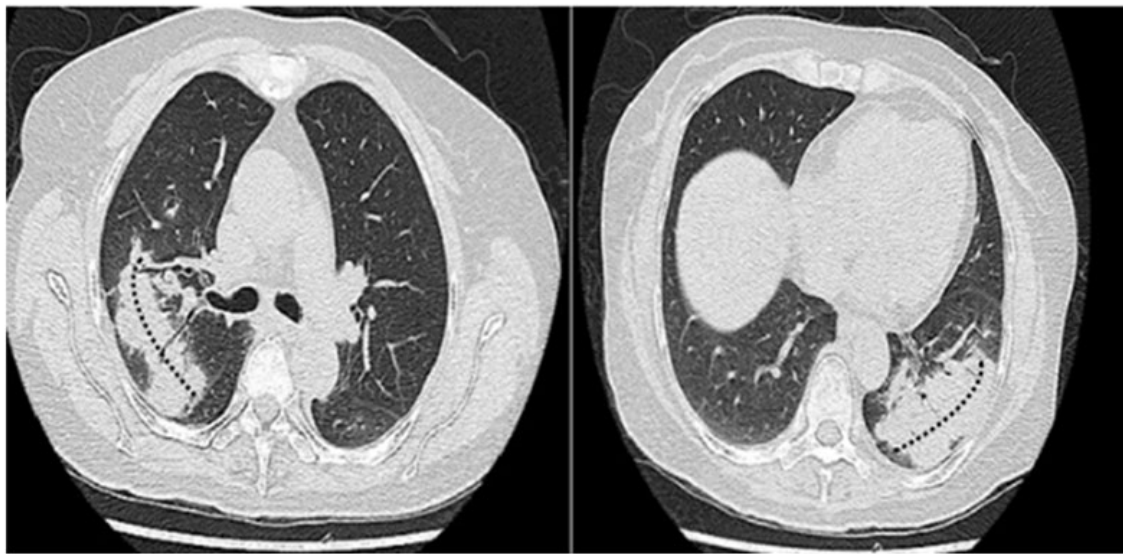


Figure S1. Female patient aged 57 years with diabetes for 3 years. The main complaints were cough and sputum for more than 20 days, with fever for several days. CT showed consolidation in the upper lobe of the right lung and the lower lobe of the left lung. Lesions were located in the outer part of the lung, parallel to the pleura (dotted line).

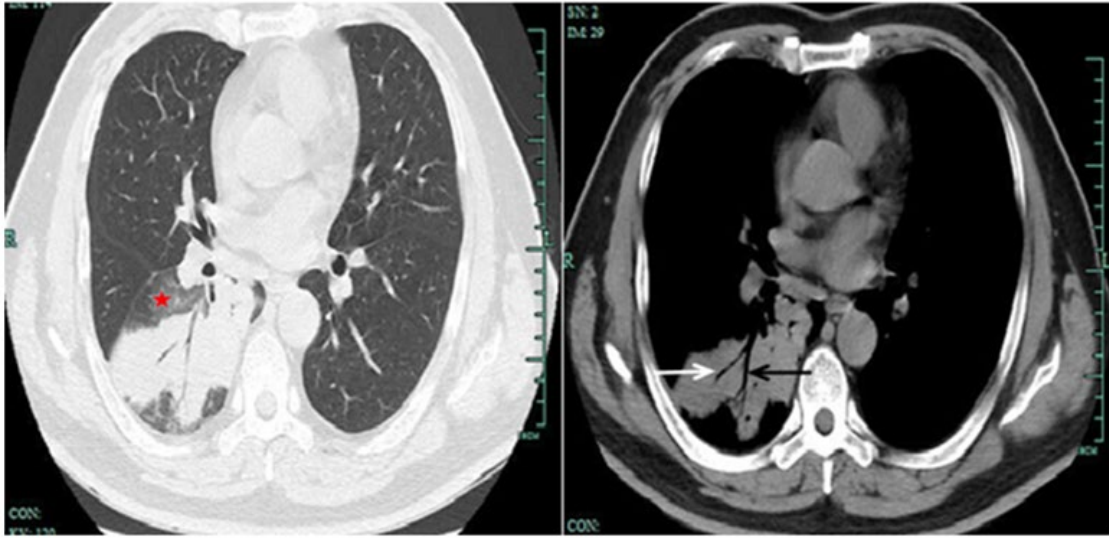


Figure S2. Male patient aged 47 years with hypertension for 3 years. The main complaints were cough, sputum, and chills for 7 days. CT showed lumpy consolidation in the lower lobe of the right lung. Bronchial perforation (black arrow) and natural termination (white arrow) were observed, with a halo sign (red asterisk) around them.

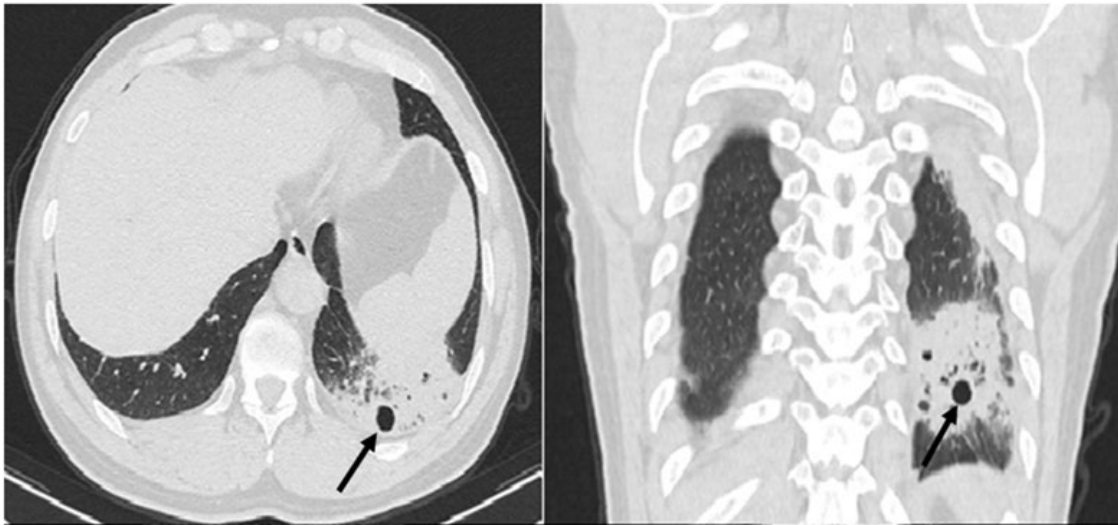


Figure S3. Male patient aged 49 years in an immunocompetent state. The main complaint was cough for 1 month. CT showed consolidation in the lower lobe of the left lung, with cavitation and smooth wall in the cross-section and coronal position (black arrow).