

Original Article



Genetic Diagnosis of Pyruvate Kinase Deficiency in Undiagnosed Iranian Patients with Severe Hemolytic Anemia, using Whole Exome Sequencing

Jafar Mehrabi Sisakht, PhD¹; Maghsood Mehri, PhD¹; Hossein Najmabadi, PhD^{1,2}; Azita Azarkeivan, MD³; Maryam Neishabury, PhD^{1*}

¹Genetics Research Center, University of Social Welfare and Rehabilitation Sciences, Tehran, Iran

²Kariminejad-Najmabadi Pathology & Genetics Centre, Tehran, Iran

³Blood Transfusion Research Center, High Institute for Research and Education in Transfusion Medicine, Tehran, Iran

Abstract

Background: After ruling out the most common causes of severe hemolytic anemia by routine diagnostic tests, certain patients remain without a diagnosis. The aim of this study was to elucidate the genetic cause of the disease in these patients using next generation sequencing (NGS).

Methods: Four unrelated Iranian families including six blood transfusion dependent cases and their parents were referred to us from a specialist center in Tehran. There was no previous history of anemia in the families and the parents had no abnormal hematological presentations. All probands presented severe congenital hemolytic anemia, neonatal jaundice and splenomegaly. Common causes of hemolytic anemia were ruled out prior to this investigation in these patients and they had no diagnosis. Whole exome sequencing (WES) was performed in the probands and the results were confirmed by Sanger sequencing and subsequent family studies.

Results: We identified five variants in the *PKLR* gene, including a novel unpublished frameshift in these families. These variants were predicted as pathogenic according to the ACMG guidelines by Intervar and/or Varsome prediction tools. Subsequent family studies by Sanger sequencing supported the diagnosis of pyruvate kinase deficiency (PKD) in six affected individuals and the carrier status of disease in their parents.

Conclusion: These findings show that PKD is among the rare blood disorders that could remain undiagnosed or even ruled out in Iranian population without performing NGS. This could be due to pitfalls in clinical, hematological or biochemical approaches in diagnosing PKD. Furthermore, genotyping PKD patients in Iran could reveal novel mutations in the *PKLR* gene.

Keywords: Genetic diagnosis; *PKLR* gene; Pyruvate kinase deficiency; Whole Exome Sequencing

Cite this article as: Mehrabi Sisakht J, Mehri M, Najmabadi H, Azarkeivan A, Neishabury M. Genetic diagnosis of pyruvate kinase deficiency in undiagnosed Iranian patients with severe hemolytic anemia, using whole exome sequencing. Arch Iran Med. 2022;25(10):691-697. doi: 10.34172/aim.2022.108

Received: July 22, 2021, Accepted: December 28, 2021, ePublished: October 1, 2022

Introduction

In our previous studies, whole exome sequencing (WES) helped us to identify various rare types of hereditary blood disorders among Iranian individuals with severe anemia and no diagnosis. These included sideroblastic anemia in four families,¹ Diamond-Blackfan anemia, adenosine deaminase deficiency and congenital dyserythropoietic anemia in other group of four families² and a case of BENTA disease (B cell expansion with NF- κ B and T cell anergy) in one family.³

Here, we present the diagnosis of pyruvate kinase deficiency (PKD) by WES in another group of four Iranian families in whom the probands had severe hemolytic anemia and the common causes of this phenotype, including hemoglobinopathies, G6PD deficiency, spherocytic and autoimmune hemolytic anemia⁴ were ruled out prior to this investigation.

With an estimated frequency of 3–8 in 1 000 000,⁵ PKD is defined as a rare but the most common defect in the glycolytic pathway. This disease is associated with

congenital non-spherocytic hemolytic anemia, with a variety of clinical manifestations and severity, ranging from fetal hydrops to fully compensated anemia.^{5–9} Carrier frequencies of 1–5% have been reported in two provinces in Iran.¹⁰

At least 371 pathogenic mutations in the *PKLR* gene have been associated with PKD^{8,11} and at least 600 affected families have been reported.⁹ Meanwhile, it is believed that many of the PKD cases remain undiagnosed or misdiagnosed and the frequency of the disease could be underestimated.^{9,12} Pitfalls in the diagnosis of PKD are due to several reasons. These include its overlapping clinical phenotypes with other types of hemolytic anemia, the autosomal recessive nature of the disease (where parents are normal with no history of disease in the family), wide variability in disease severity (where some patients remain unaware of their disorder) and error proneness of PK enzymatic activity assays. The latter is further complicated when the patients receive RBC transfusion. Finally, unfamiliarity with the disease even

*Corresponding Author: Maryam Neishabury, PhD; Genetics Research Center, University of Social Welfare and Rehabilitation Sciences, Koodakyar Avenue, Evin, Tehran 1985713834, Iran; Tel: +98-21-22180138; Fax: +98-21-22180138; Email: nneisha@gmail.com

among specialists also contributes to undiagnosis of this disease.^{5,9} With the aim of improving and harmonizing the diagnosis of PKD, a global international working group, consisting of 20 different centers, has published diagnostic recommendations, which is endorsed by the European Network in Rare Hematological Diseases. The recommended guideline relies on complementary techniques including biochemical analysis and next generation sequencing (NGS), which are performed in different order in different laboratories.^{9,12}

Currently, there is no definite cure for PKD and supportive care for this disease include transfusions, splenectomy and chelation therapy with essential need for monitoring to avoid complications. Meanwhile, ongoing research in PK activators^{13,14} and gene therapy¹⁵ provide some hope as potential future treatment strategies. In parallel, efforts for optimizing diagnostics are also proceeding.^{7,9,11}

Here, we report identification of pathogenic *PKLR* variants in four Iranian families with severe hemolytic anemia in undiagnosed probands, by WES.

Materials and Methods

Four unrelated Iranian families (Figure 1, families A, B, C & D) including six affected individuals (three children and three adults) together with their unaffected parents (eight individuals) were referred to our research center from an adult thalassemia clinic in Tehran. All probands presented severe jaundice and anemia in early days of their life and received exchange transfusion. They were red blood cell (RBC) transfusion dependent at regular intervals since infancy and either presented splenomegaly or were

splenectomized. Hemoglobinopathies, G6PD deficiency, spherocytosis and autoimmune hemolytic anemia were ruled out in all families prior to this investigation. In addition, biochemical assay of pyruvate kinase (PK) enzyme activity in the probands of the first and third family (Figure 1A; II-1 and Figure 1C; II-1 respectively) had shown normal results prior to this study. No family history of anemia was present in these families and parents in these families had normal hematological indices. More specific data including demographic information related to the affected individuals in each family were as follows (unaffected siblings did not participate in this study):

Family A: The proband (Figure 1A; II-1) (from the Kohgiluyeh and Boyer Ahmad province) was an 18-month-old boy. He had been admitted to the neonatal ward due to jaundice and laboratory findings of hemolytic anemia on the 1st day of his life. He had received exchange transfusion on the 2nd day of his life and had developed polar and splenomegaly 14 days later. He has received RBC transfusion every 20–25 days since his first exchange transfusion. His bone marrow examination revealed essentially cellular marrow, erythroid hyperplasia, mild megaloblastic changes and less than 1% erythroid binucleation. Other abnormal hematological findings included moderate normochromic anemia and mild anisocytosis, nucleated red blood cells (1–2/100 WBCs); low RBC ($3.56 \times 10^6/\mu\text{L}$); low hemoglobin (8.7 g/dL), low hematocrit (26.3%), low mean corpuscular hemoglobin (MCH) (24.4 pg), high platelet ($650 \times 10^3/\mu\text{L}$) and high reticulocyte (12%) indices. He also had increased SGOT (serum glutamic-oxaloacetic transaminase) and bilirubin levels. The biochemical assay of enzyme activity

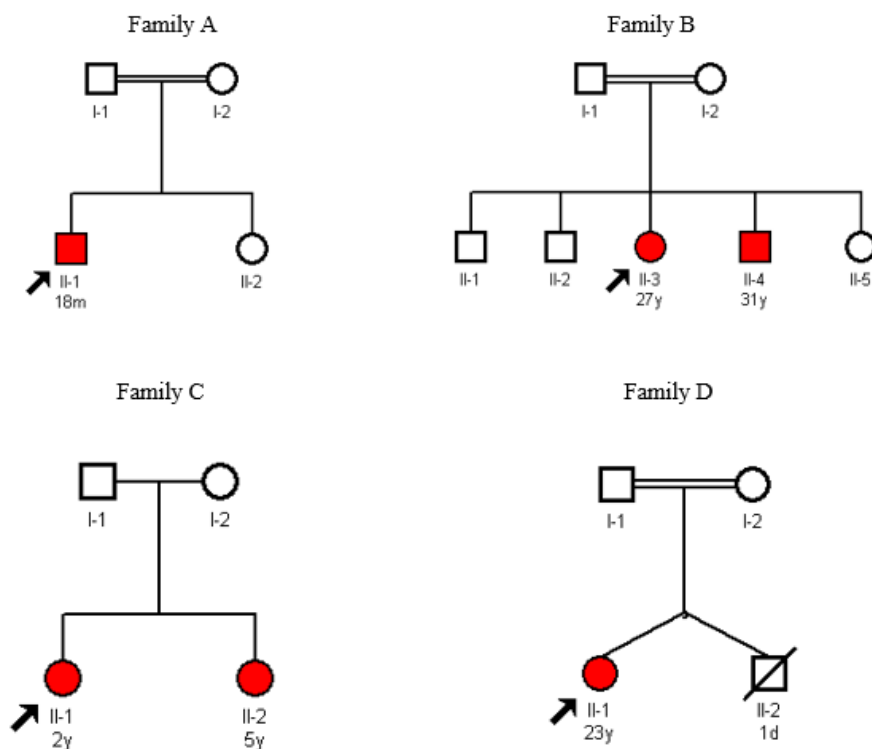


Figure 1. Pedigrees for Families A-D.

performed prior to this investigation was reported normal in this proband. His parents were first cousins and had normal hematological indices.

Family B: The proband in the second family (Figure 1B; II-3) was a 27-year-old female (from the Fars province) with splenomegaly and RBC transfusion intervals of every 22–23 days. She had a 31-year-old affected brother (Figure 1B; II-4), who was splenectomized at 9 years of age. Splenectomy had reduced his blood transfusion intervals from the regular interval of every 23 days to irregular intervals of 60–80 days. They both had presented severe jaundice and splenomegaly at infancy and received exchange transfusion in the first days of their life. The results of childhood bone marrow examination were not recorded and available for any of these siblings. Abnormal hematological findings in the proband included low RBC ($3.2 \times 10^6/\mu\text{L}$), low hemoglobin (9.2 g/dL), low hematocrit (26.9%) and high reticulocyte (5.7%). She had a normal platelet count. The abnormal hematological indices of the proband's affected brother, who was splenectomized included high WBC ($14.99 \times 10^3/\mu\text{L}$), low RBC ($2.81 \times 10^6/\mu\text{L}$), low hemoglobin (9.1 g/dL), low hematocrit (29.3%), high MCV (104.3 fL), high platelet ($810 \times 10^3/\mu\text{L}$), high nucleated red blood cells (12/100 WBCs), polychromasia (3+), anisocytosis (3+) and macrocytosis (slight). Both affected siblings showed increased SGOT, SGPT (serum glutamic-pyruvic transaminase) and bilirubin. Their parents were second cousins and had normal hematological indices.

Family C: The proband in the third family (Figure 1C; II-1) was a 2-year-old girl (from the Khuzestan province) with an affected 5-year-old sister (Figure 1C; II-2). They both had presented severe jaundice and anemia at birth and received exchange transfusion in infancy. They both had RBC transfusion intervals of every 30 days since their exchange transfusion. Bone marrow examination of the elder sister, who presented splenomegaly, showed normocellular marrow with increased erythroid series. Their abnormal hematological findings included low RBC ($2.16 \times 10^6/\mu\text{L}$), low hemoglobin (5.8 g/dL), low hematocrit (18.0%) and high platelet values ($600 \times 10^3/\mu\text{L}$) in the proband and low RBC ($2.62 \times 10^6/\mu\text{L}$); low hemoglobin (7.3 g/dL) and low hematocrit (21.3%) in her affected sister. Increased SGPT and bilirubin were reported in the elder sister of the proband. The parents in this family were non-consanguineous and had normal hematological indices.

Family D: The proband in the last family (Figure 1D; II-1) was a 23-year-old young woman (from the Khorasan province). She had a twin brother, who had died at first days of his life. She received RBC transfusion with 40–50 days intervals since her first exchange transfusion at infancy. She had been splenectomized at 6 years of age, with no great improvement in her blood transfusion needs. Her bone marrow examination showed normocellular marrow with erythroid lineage hyperplasia. Other abnormal hematological findings were as follows: low RBC (3.05),

low hemoglobin (9.5), low hematocrit (30.2), low mean corpuscular hemoglobin concentration (MCHC) (31.5(g/dL), high platelet ($760 \times 10^3/\mu\text{L}$), high reticulocyte (7.3%), nucleated RBC (1/100WBCs), increased bilirubin, SGOT, SGTP and alkaline phosphatase, anisocytosis (2+), poikilocytosis (1+), macrocytosis (1+) and Howell-Jolly body (1+). Her parents were first cousins and had normal hematological indices.

Whole Exome Sequencing

After informed consent, 5–10 mL blood samples were taken from the probands, their parents and their affected siblings. The salting out procedure¹⁶ was used to extract DNA. After qualitative and quantitative evaluation using standard techniques, the probands' DNA was subjected to WES (HiSeq400 sequencer, Sure Select V6-Post by Macrogen Inc.) Mapping reference was hg19 from UCSC (original GRCh37 from NCBI, Feb. 2009). The red cell NGS gene panel list (<http://www.viopath.co.uk/our-tests/red-cell-gene-panel>) was used to analyze the data. The UCSC genome browser, Intervar¹⁷ and Varsome¹⁸ web tools were used for bioinformatic predictions of the pathogenicity of the variants. The population-specific Iranome database¹⁹ was used to investigate the frequency of the variants in the Iranian population.

PCR and Sanger Sequencing

PCR reverse (R) and forward (F) primers (Table 1) were designed by primer 3 to amplify the variant region in the DNA of the probands and their family members. Sanger sequencing was performed to sequence the variant region in each individual.

Results

Whole Exome Sequencing and Family Study by Sanger Sequencing

Five variants in the *PKLR* gene, including one previously unpublished frame shift variant, was identified by WES. Family studies by Sanger sequencing showed variants listed in Table 2 in homozygous (families A, B and D) or compound heterozygous state (family C) in affected individuals. Parents in each family were heterozygous carriers. Chromatograms are only presented for the novel variant identified in family C (Figure 2).

Variant in Family A

The 18-month-old proband in the first family (Figure 1A; II-1), had a previously reported stop gain variant c.1528C>T:p.R510X^{11,20,21} (Table 2). This variant is located just next to the c.1529G>A; p.R510Q, which is reported as the most frequent mutation of the *PKLR* gene in Northern Europe and USA.⁵ This variant was predicted as pathogenic by both Intervar and Varsome.

Variant in Family B

In the second family, the 27 year-old proband (Figure 1B; II-3) and her 31 year-old affected brother (Figure 1B; II-4),

Table 1. PCR Primers for Sanger Sequencing

Family	Primer Name	Primer Sequence (5'→3')	Length (bp)	Product Length
A	PKLR-EXON10-F	GCCCAGAGAAGTATGATGACTTAC	24	472
	PKLR-EXON10-R	GTGATATGCCAGACTGATATCTCAG	25	
B	PKLR-EXON2-F	ATCCTAGCTGATCCATACTTAG	22	504
	PKLR-EXON2-R	GCACCTCAAGAAATACCAATAG	22	
C	PKLR-EXON1-F	CCAAAACCCACCTAGCCAGT	20	550
	PKLR-EXON1-R	GCTCCCTGGATCACTAGAGC	21	
	PKLR-EXON2-F	CCTAGATTTGAATCCTAGCTGATCC	25	757
	PKLR-EXON2-R	CCCGGCCTCACTTTCTAAC	19	
D	PKLR-EXON5-F	GGGAAGGTGTGATCGGTCTG	20	537
	PKLR-EXON5-R	TACCATGCTGAGTCCATCGC	20	

had a stop gain variant c.172C>T:p.Q58X (Table 2), which was previously submitted to the Leiden Open Variation Database (LOVD) as an unpublished observation from Iran¹¹ and a second observation of this variant was recently reported in PKD patients.²² This variant was predicted as likely pathogenic in Intervar and as pathogenic in Varsome.

Variants in Family C

The affected siblings with 2 and 5 years of age in the third family (Figure 1C; II-1 and II-2) had two variants. These were c.72_73insCT:p.K25Lfs*5 (Table 2; Figure 2) and c.283G>T:p.G95W (Table 2) in compound heterozygous state. The first frameshift variant, which was predicted as pathogenic by Intervar, was novel and not published before. The second missense variant, which was previously published as a causative variant for PKD,²¹ was annotated as a variant of unknown significance and pathogenic by

Intervar and Varsome, respectively.

Variant in Family D

In the last family, a previously reported variant c.520G>T:p.E174X²¹(Table 2) was identified in the 23-year-old proband (Figure 1D; II-1). This variant was predicted as pathogenic by both Intervar and Varsome prediction tools.

Discussion

Six undiagnosed patients, including three children and three adults from four unrelated Iranian families were referred to our research center. These patients presented the typical clinical and hematological manifestations of congenital hemolytic anemia with unidentified reason. Initial suspicion to common causes of hemolytic anemia, including alpha and beta thalassemia, G6PD deficiency and autoimmunity⁴ was eliminated prior to this investigation. In addition, biochemical analysis for pyruvate kinase

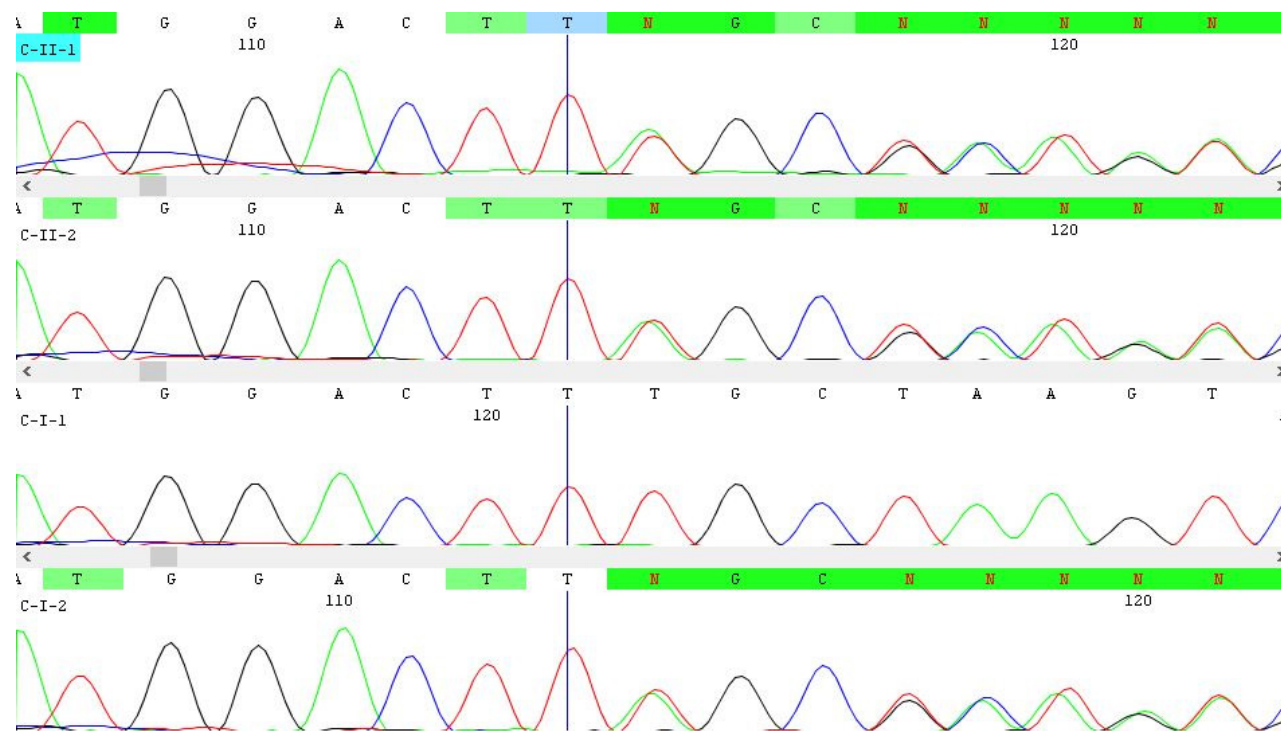


Figure 2. Chromatograms of Novel Frameshift PKLR Variant c.72_73insCT: p.K25Lfs*5 in family C. As shown, the proband (C-II-1) and her affected sister (C-II-2) inherited this variant from their carrier mother (C-I-2).

Table 2. Variants Identified by Whole Exome Sequencing in Probands of Families A-D

Family	A	B	C	D
Probands and other affected member homozygous for the variant	II-1	II-3 and II-4	II-1 and II-2	II-1
Variant coordinate	1: 155261637	1: 155270000	1:155271114	1: 155265081
HGMD variant	CM981581	CM1615476	-	CM981554
Ref>Alt	G>A	G>A	T >TAG	C>A
Variant Type	stop gain	stop gain	frameshift insertion	stop gain
Zygosity	Hom	Hom	Het	Hom
HGVS	PKLR: NM_000298.6:exon10:c.1528C>T:p.R510X	PKLR: NM_000298.6:exon2:c.172C>T:p.Q58X	PKLR: NM_000298:exon1:c.72_73insCT:p.K25Lfs*5	PKLR: NM_000298:exon5:c.520G>T:p.E174X
dbSNP-ID	rs1331742633	-	-	rs750857114
InterVar prediction	Pathogenic (PV51, PM2, PP3)	Likely pathogenic (PV51, PM2)	Pathogenic (PV51, PM2, PP2)	Pathogenic (PV51, PP3, PM2)
Varsome	Pathogenic (PV51, PS3, PM2, PP3, PP5)	Pathogenic (PV51, PM2, PP3)	Likely pathogenic (PV51, PM2)	Pathogenic (PV51, PM5, PM2, PP2, PP3)
MAF in Iranome	Not Reported	Not Reported	Not reported	Not Reported
MAF in gnomAD Total (Exomes/Genomes)	0.00001414	Not reported	Not reported	0.000003986
CADD_phred score	44	34	-	34
Publications	11, 20, 21	11, 22	-	21
				Different nucleotide substitution in the same position as CM984072 (CGG>AGC, Gly95Arg)

enzyme activity prior to our investigation had shown normal results for the probands in families A and C.

After performing WES in the probands, we identified five variants in *PKLR* gene, which were predicted as pathogenic according to ACMG guidelines by Intervar and/or Varsome web servers. These included one unpublished new *PKLR* frameshift variant (c.72_73insCT:p.K25Lfs*5), which was identified in two affected children of family C in compound heterozygous state, together with a previously reported *PKLR* variant (Table 2). The WES findings (Table 2) and segregation analysis (Only shown for novel variant; Figure 2) in all families could conclude diagnosis of PKD in affected families and showed that the results of previously performed biochemical enzyme activity assay in two of these families were false normal.

The result of this investigation places PKD among other rare blood disorders that could remain undiagnosed in the Iranian population without WES.¹⁻³ In addition, findings in this study raise serious concerns on the risk of false normal results in biochemical analysis of PK enzyme activity in diagnostic setups. Some possible reasons for false normal results include contamination with donor blood in blood transfusion dependent affected individuals, incomplete removal of platelets and leucocytes during sample preparation and increased reticulocytes in PKD patients, which express more active isozymes to rescue glycolysis.⁹

Diagnostic guidelines, endorsed by the European Network in Rare Hematological Diseases, which were published in 2019, have recommended strategies for accurate diagnosis of PKD and reducing the errors.⁹ According to these guidelines, the PK activity assay by spectrophotometry described by Beutler in 1984²³ is recommended as a reference test for biochemical enzymatic assay. Correct timing of this test, 120 days after the last transfusion (as the optimal time distance) is important in transfusion dependent patients. Moreover, testing the parents, who would be expected to show low enzyme activity if they are carriers, is recommended to prevent false normal results related to blood transfusion in their affected children. For optimum RBC purification, alpha cellulose/microcrystalline column is recommended with considering buffy coat removal as an alternative. To minimize false normal results due to reticulocyte interference in PKD patients, the use of a control sample from a patient with the same degree of reticulocytosis and/or comparing the PK activity to other cell-age dependent enzymes of the patient such as hexokinase is recommended.⁵⁻⁹ A rarer reason for false normal results is a kinetically abnormal mutant PK enzyme that behaves normal in laboratory conditions but is ineffective *in vivo*. Thermal stability test could reveal the true functional effect of such mutations.^{7,9}

Although compared to difficult to perform and error prone biochemical assays, NGS is quick and accurate, it has its own limitations. First of all, it is still not affordable for many patients and secondly, if a variant of unknown

significance is identified in *PKLR* that cannot be predicted as pathogenic based on ACMG guidelines by reliable prediction databases, its pathogenicity has to be confirmed by PK enzymatic assay. Therefore, both enzyme analysis and DNA studies are recommended as complementary techniques for the diagnosis of PK deficiency.^{5,9}

Application of WES as a new diagnostic approach in diagnosing rare types of anemia in Iran helped us to find the pathogenic mutations in the *PKLR* gene, including a novel variant in severe hemolytic anemia patients without diagnosis. Subsequent data analysis and family investigation confirmed the diagnosis of PKD in these individuals. This approach could lead to the diagnosis of more PKD patients as well as identifying more novel mutations in the *PKLR* gene.

In conclusion, PKD is among the rare types of hereditary blood disorder that could remain undiagnosed in Iran. This reflects the complexity of its clinical, hematological and biochemical diagnostics that need regular evaluation and update in diagnostic centers. Meanwhile, WES remains a quick and accurate way to diagnose rare types of hereditary blood disorders, including PKD among undiagnosed individuals with severe anemia. Furthermore, genotyping PKD patients in Iran could reveal novel mutations in the *PKLR* gene.

Acknowledgments

We are sincerely grateful to the patients and their families for their participation in our study.

Author Contributions

Conceptualization: Maryam Neishabury, Azita Azarkievvan.

Data curation: Maryam Neishabury, Jafar Mehrabi Sisakht, Maghsood Mehri, Azita Azarkeivan.

Formal Analysis: Maryam Neishabury, Jafar Mehrabi Sisakht, Azita Azarkeivan.

Funding Acquisition: Maryam Neishabury.

Investigation: All authors have contributed.

Methodology: All authors have contributed.

Project Administration: Maryam Neishabury.

Resources: Maryam Neishabury.

Software: Maryam Neishabury, Jafar Mehrabi Sisakht, Maghsood Mehri.

Supervision: Maryam Neishabury, Azita Azarkeivan.

Validation: All authors.

Visualization: All authors.

Writing—Original draft: Jafar Mehrabi Sisakht, Maryam Neishabury.

Writing-review and editing: Maryam Neishabury.

Conflict of Interest Disclosures

The authors declare no conflict of interest.

Ethical Approval

This project was approved by the Ethics Committee of Genetics Research Center (GRC), University of Social Welfare and Rehabilitation Sciences (USWR), Tehran, Iran. (IR.USWR.REC.1398.097)

Funding

This work was funded by the Deputy of Research, University of Social Welfare and Rehabilitation Sciences, Tehran, Iran, Grant No. 98-T-2277

References

- Mehri M, Zarin M, Ardalani F, Najmabadi H, Azarkeivan A, Neishabury M. Novel mutations in mitochondrial carrier family gene SLC25A38, causing congenital sideroblastic anemia in Iranian families, identified by whole exome sequencing. *Blood Cells Mol Dis*. 2018;71:39-44. doi: 10.1016/j.bcmd.2018.02.002.
- Neishabury M, Mehri M, Fattahi Z, Najmabadi H, Azarkeivan A. Novel variants in Iranian individuals suspected to have inherited red blood cell disorders, including bone marrow failure syndromes. *Haematologica*. 2020;105(1):e1-e4. doi: 10.3324/haematol.2019.216069.
- Neishabury M, Azarkeivan A, Mehri M, Najmabadi H, Cheraghi T. The first case of BENTA disease (B cell expansion with NF- κ B and T cell anergy) from Iran. *J Clin Immunol*. 2021;41(4):811-3. doi: 10.1007/s10875-021-00965-0.
- Kim Y, Park J, Kim M. Diagnostic approaches for inherited hemolytic anemia in the genetic era. *Blood Res*. 2017;52(2):84-94. doi: 10.5045/br.2017.52.2.84.
- Grace RF, Barcellini W. Management of pyruvate kinase deficiency in children and adults. *Blood*. 2020;136(11):1241-9. doi: 10.1182/blood.2019000945.
- Al-Samkari H, Van Beers EJ, Kuo KHM, Barcellini W, Bianchi P, Glenthøj A, et al. The variable manifestations of disease in pyruvate kinase deficiency and their management. *Haematologica*. 2020;105(9):2229-39. doi: 10.3324/haematol.2019.240846.
- Bianchi P, Fermo E. Molecular heterogeneity of pyruvate kinase deficiency. *Haematologica*. 2020;105(9):2218-28. doi: 10.3324/haematol.2019.241141.
- Bianchi P, Fermo E, Lezon-Geyda K, van Beers EJ, Morton HD, Barcellini W, et al. Genotype-phenotype correlation and molecular heterogeneity in pyruvate kinase deficiency. *Am J Hematol*. 2020;95(5):472-82. doi: 10.1002/ajh.25753.
- Bianchi P, Fermo E, Glader B, Kanno H, Agarwal A, Barcellini W, et al. Addressing the diagnostic gaps in pyruvate kinase deficiency: Consensus recommendations on the diagnosis of pyruvate kinase deficiency. *Am J Hematol*. 2019;94(1):149-61. doi: 10.1002/ajh.25325.
- Yavarian M, Karimi M, Shahriary M, Afrasiabi AR. Prevalence of pyruvate kinase deficiency among the south Iranian population: quantitative assay and molecular analysis. *Blood Cells Mol Dis*. 2008;40(3):308-11. doi: 10.1016/j.bcmd.2007.08.008.
- Canu G, De Bonis M, Minucci A, Capoluongo E. Red blood cell PK deficiency: an update of PK-LR gene mutation database. *Blood Cells Mol Dis*. 2016;57:100-9. doi: 10.1016/j.bcmd.2015.12.009.
- Grace RF, Mark Layton D, Barcellini W. How we manage patients with pyruvate kinase deficiency. *Br J Haematol*. 2019;184(5):721-34. doi: 10.1111/bjh.15758.
- Rab MAE, Van Oirschot BA, Kosinski PA, Hixon J, Johnson K, Chubukov V, et al. AG-348 (Mitapivat), an allosteric activator of red blood cell pyruvate kinase, increases enzymatic activity, protein stability, and ATP levels over a broad range of PKLR genotypes. *Haematologica*. 2021;106(1):238-49. doi: 10.3324/haematol.2019.238865.
- Yang H, Merica E, Chen Y, Cohen M, Goldwater R, Kosinski PA, et al. Phase 1 single- and multiple-ascending-dose randomized studies of the safety, pharmacokinetics, and pharmacodynamics of AG-348, a first-in-class allosteric activator of pyruvate kinase R, in healthy volunteers. *Clin Pharmacol Drug Dev*. 2019;8(2):246-59. doi: 10.1002/cpdd.604.
- Quintana-Bustamante O, Fañanas-Baquero S, Orman I, Torres R, Duchateau P, Poirrot L, et al. Gene editing of PKLR gene in human hematopoietic progenitors through 5' and 3' UTR modified TALEN mRNA. *PLoS One*. 2019;14(10):e0223775. doi: 10.1371/journal.pone.0223775.
- Miller SA, Dykes DD, Polesky HF. A simple salting out procedure for extracting DNA from human nucleated cells. *Nucleic Acids Res*. 1988;16(3):1215. doi: 10.1093/nar/16.3.1215.
- Li Q, Wang K. InterVar: clinical interpretation of genetic variants by the 2015 ACMG-AMP guidelines. *Am J Hum Genet*. 2017;100(2):267-80. doi: 10.1016/j.ajhg.2017.01.004.
- Kopanos C, Tsiolkas V, Kouris A, Chapple CE, Albarca Aguilera M, Meyer R, et al. VarSome: the human genomic variant search engine. *Bioinformatics*. 2019;35(11):1978-80. doi: 10.1093/bioinformatics/bty897.
- Fattahi Z, Beheshtian M, Mohseni M, Poustchi H, Sellars E, Nezhadi SH, et al. Iranome: a catalog of genomic variations in the Iranian population. *Hum Mutat*. 2019;40(11):1968-84. doi: 10.1002/humu.23880.
- Demina A, Varughese KI, Barbot J, Forman L, Beutler E. Six previously undescribed pyruvate kinase mutations causing enzyme deficiency. *Blood*. 1998;92(2):647-52.
- Zanella A, Bianchi P. Red cell pyruvate kinase deficiency: from genetics to clinical manifestations. *Baillieres Best Pract Res Clin Haematol*. 2000;13(1):57-81. doi: 10.1053/beha.1999.0057.
- Unal E, Gok V, Roy NBA, Hipkiss R, Howard K, Ozcan A, et al. PB1974 pyruvate kinase deficiency in four children with two unpublished mutations. *HemaSphere*. 2019;3(Suppl 1):896. doi: 10.1097/01.hs9.0000566392.79437.06.
- Beutler E. *Red Cell Metabolism: A Manual of Biochemical Methods*. 3rd ed. Orlando, FL: Grune & Stratton; 1984.